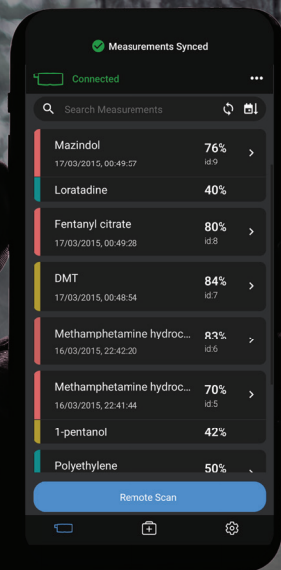


# Serstech ChemDash Mobile



## Simplicity. Speed. Precision.

### Enhance Serstech Arx mkII capabilities via your phone

Serstech ChemDash Mobile transforms the way you identify chemical hazards.

Seamlessly connect to the Serstech Arx mkII instrument, perform remote scans, and access comprehensive measurement data from your mobile device.

With GPS positioning, photo integration, and instant report creation and sharing,

Serstech ChemDash Mobile transforms chemical data management and analysis.

Enhance operator safety, streamline data analysis, and easily communicate reports directly from the field with the most advanced and user-friendly chemical analysis tool available.

- Scan and record measurements
- Safely ignite scans from a distance
- View measurement history
- Add images, notes, and GPS location
- Create and send detailed reports directly from the fields
- Create reports for Calorimetric Kits



ACKODUS ASIA  
18 Boon Lay Way #09-107/108 Tradehub 21 Singapore 609966  
Phone : +65 9869 5661 | Email : info@ackodus.com |  
www.ackodus.com



# Serstech ChemDash Mobile

## App Features

- **Connect to Serstech Arx mkII** Establish a connection with the Serstech Arx mkII instrument for real-time data access.
- **Safe Remote Scan** Remotely control the instrument from a safe distance, ensuring user safety and reducing the need for close proximity to potentially hazardous materials.

## Data Enhancement

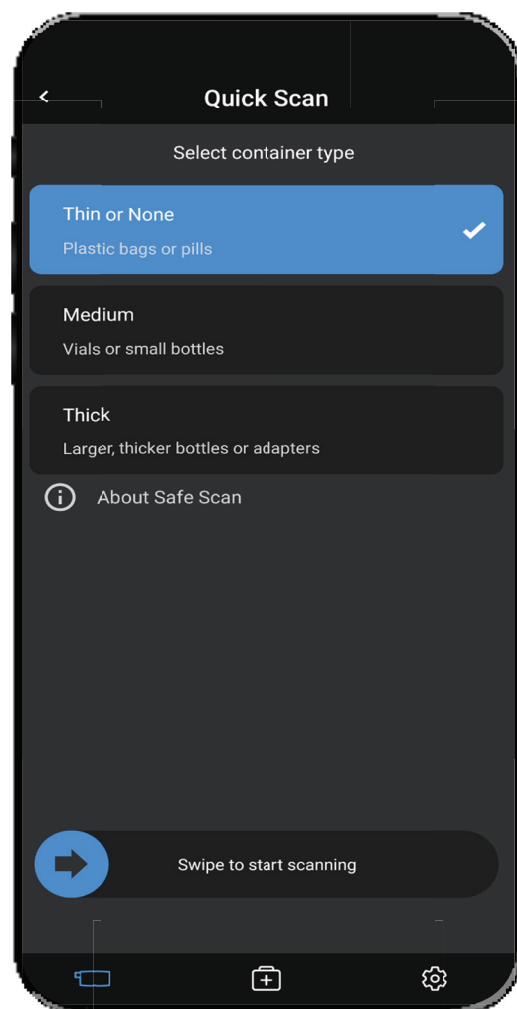
- **Easy Access to Arx Measurements** Obtain quick access to all measurements and their associated data directly on your mobile device.
- **Spectral Analysis** View spectra and other data for analysis and comparison.

## Reports

- **Images** Add images to measurements for better documentation of both the substance and its identification environment.
- **Notes** Easily include extensive notes to your measurements and from the history list.
- **GPS Coordinates** Automatically add GPS coordinates to each measurement.
- **Instant Reporting** Quickly create and share comprehensive reports on the fly.
- **Sharing** Effortlessly share detailed reports quickly and securely in PDF format. Save valuable time with immediate reporting, ensuring that critical information is communicated without delay.

## Colorimetric Kit Integration

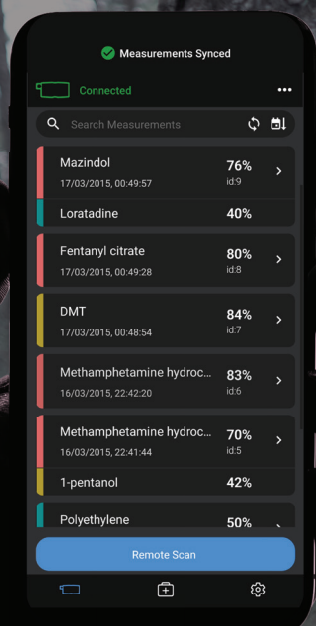
- **Incorporate Fan-her and Dabit kit data** Seamlessly add colorimetric kit data into reports for comprehensive analysis and documentation through ChemDash mobile.
- **Share kit studies** Share in PDF format directly from the field.



Connect to Serstech Arx mkII – Remote Scan, Document and Share



# Serstech ChemDash Mobile



**Simplicity. Speed. Precision.**

## Enhance Serstech Arx mkII capabilities with your phone.

Designed for field professionals, this powerful application enables users to seamlessly connect to the **Serstech Arx mkII instrument**, perform **remote scans**, and access comprehensive measurement data—all from mobile devices.

With **GPS positioning**, users can accurately document the location of each measurement, enhancing situational awareness and ensuring precise data collection. The ability to initiate remote scans allows operators to maintain a **safe distance** from potentially hazardous materials.

- Scan and record measurements
- Safely ignite scans from a distance
- View measurement history
- Add images, notes, and GPS location
- Create and send detailed reports directly from the fields
- Create reports for Calorimetric Kits

ChemDash Mobile streamlines the report creation process, enabling users to **generate detailed reports** on the spot. With integrated photo documentation and instant sharing capabilities, critical information can be communicated efficiently and effectively.

By focusing on safety, efficiency, and real-time data management, Serstech ChemDash Mobile empowers users to navigate challenging environments with confidence, making it an indispensable tool for modern chemical analysis.

