



UAV PLATFORMS



UAV Platforms

Introduction



SteelRock Technologies offers a range of custom-built, rotary UAV platforms, for a broad range of military, security and commercial applications.

Designed and manufactured in the UK, our products offer class-leading performance, flexibility of use and a variety of payload capabilities.

All SR's UAV systems have extensive safety and redundancy features built-in, supported by comprehensive training, operation and maintenance services.

SR's UAV systems offer a high level of interoperability and interchangeable sensors, backed-up by a team with a deep understanding of the platforms' tactical, strategic and commercial uses.

All SR's UAVs are custom-built to individual customer specifications, responding to specific role, operating environment and payload requirements.



SR-1 Eagle Owl: Surveillance / Industrial Inspection

The SR-1 Eagle Owl UAV is a state-of-the-art rotary UAV that has been designed and configured for all government-related covert surveillance and combat scenarios, as well as a broad range of civil / industrial inspection applications.

Basic Configuration: The platform is built around an x8 motor / rotor drive system with two counter-rotating propellers / motors at each corner. The platform has been designed with long-range, endurance missions in mind, in a variety of operating conditions.

Technical Overview: SR 360° gimbal with 40x digital camera; 640 thermal imaging; Facial / number plate recognition; Live HD streaming; SR LIDAR ground mapping; HD/thermal telemetry system; “End-to-end” signal encryption.

Components / Technical Specifications¹ :

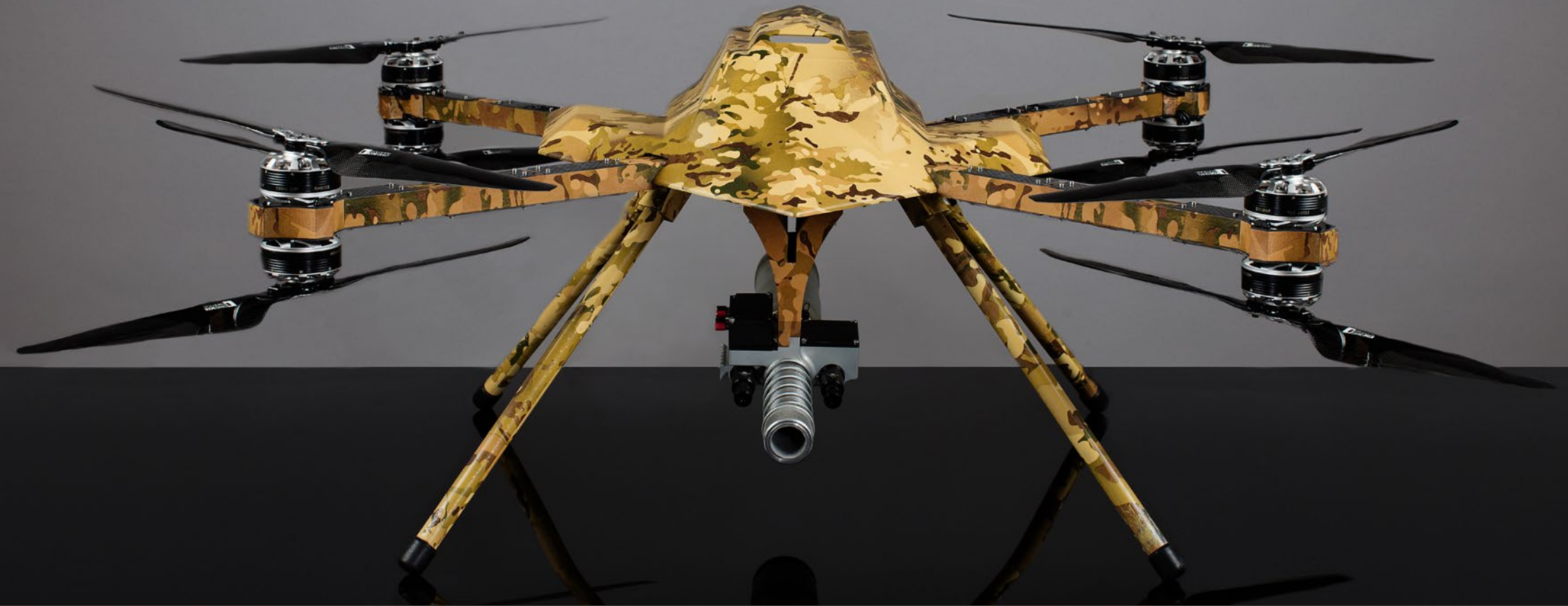
Dimensions	1060mm x 840mm x 530mm
Weight	7kgs (without batteries)
Motors & Rotors	SR-Spec KDE Direct
Speed Controller	SR high power single board ESC system
Rotor Arms	Aluminium (bent arm or straight arm)
Sensor Array	SR 360° gimbal comprising: <ul style="list-style-type: none">• 40x zoom digital camera• 640 thermal imaging camera• Target tracking system for both daylight and thermal cameras• Facial / number plate recognition capabilities ²• Live HD streaming to RC operator / ground station
Ground Mapping System	SR LIDAR ground mapping system
Flight Control	SR Flight Control System
RC / Telemetry Unit	SR custom base station
Video Telemetry	SR long-range 4K HD video / thermal camera telemetry system
Signal Encryption	SR “end-to-end” signal encryption
Airframe	SR-designed & cut carbon fibre
Landing Gear	Fixed, carbon fibre construction
Leg Mounts	SR-designed & cut milled aluminium

Optional Safety Features	A range of options are available to suit all complex operating environments including: <ul style="list-style-type: none">• High altitude propellers• SR emergency parachute system• Object avoidance software• Back-up GPS• 8 motor / rotor redundancy• Back-up flight control systems• Back-up power supply
--------------------------	--

Performance Capabilities³ :

Max Telemetry Range	200 kms from base station
Max Live HD video streaming range	100 kms from base station
Max Endurance	1+ hours
Max Payload	20 kgs
Max Speed	100 km/h

¹ All specifications are subject to change without notice and may vary depending on specific customer requirements.
² Subject to access to appropriate database.
³ Precise performance levels will depend on payload, telemetry kit used, operating environment, battery set up / condition, climatic conditions etc.



WO3 Protector: Counter-IED

The SR WO3 Protector UAV is a ground-breaking rotary UAV that has been designed and configured for IED threat identification and mitigation. Using an interchangeable payload system comprising a sophisticated thermal electro optical camera and a 40mm recoilless IED disrupter, the system has been developed as a “seek and destroy” solution to this increasing threat.

In an age where improvised explosive devices are being used to devastating effect in a variety of operational and civil environments, the ability to counter this threat quickly and at no risk to service personnel has become a strategic imperative worldwide.

IMPORTANT NOTE: The SR-WO3 Protector is only available to end-users / buyers approved by the UK Government

Basic Configuration: The platform is built around an x8 motor / rotor drive system with two counter-rotating propellers / motors at each corner. The platform has been designed with heavy-lift payloads and stability in mind in a wide range of operating conditions. The platform integrates a cooled, high powered thermal camera and a stand-off, recoilless disruptor, both configured for use on the WO3 platform.

Technical Overview: SR gimbal featuring interchangeable payload system; SR Flight Control System; 640 thermal imaging camera; 50kg payload; 100km/h.

Components / Technical Specifications⁴:

Dimensions	1125mm x 920mm x 545mm
Weight	14kgs (without batteries)
Motors & Rotors	SR-Spec KDE Direct
Speed Controller	SR high power single board ESC system
Rotor Arms	Aluminium (straight arm)
Sensor Array	Options include the following: <ul style="list-style-type: none">• SR gimbal featuring interchangeable payload system• A range of stand-off IED disrupters• A range of cooled and non-cooled thermal cameras (sold separately, subject to export controls)
Optical Array	A range of optical sensor capabilities including: <ul style="list-style-type: none">• On-board laser targeting system• 640 thermal imaging camera• HD colour camera• SR Target tracking system for both daylight and thermal cameras• Live HD streaming to RC operator / ground station
Flight Control	SR Flight Control System
RC / Telemetry Unit	SR custom base station
Video Telemetry	SR long-range 4K HD video / thermal camera telemetry system
Signal Encryption	SR “end-to-end” signal encryption
Airframe	SR-designed & cut carbon fibre
Landing Gear	Fixed, carbon fibre construction

Leg Mounts	SR-designed & cut milled aluminium
Optional Safety Features	A range of options are available to suit all complex operating environments including: <ul style="list-style-type: none">• High altitude propellers• SR emergency parachute system• Object avoidance software• Back-up GPS• 8 motor / rotor redundancy• Back-up flight control systems• Back-up power supply

Performance Capabilities⁵:

Max Telemetry Range	200 kms from base station
Max Live HD video streaming range	100 kms from base station
Max Endurance	1+ hours
Max Payload	35+ Kg
Max Speed	100 km/h

⁴ All specifications are subject to change without notice and may vary depending on specific customer requirements.

⁵ Precise performance levels will depend on payload, telemetry kit used, operating environment, battery set up / condition, climatic conditions etc.



Velvet Wasp: Precision Payload

The SR Velvet Wasp UAV is a next-generation rotary UAV that has been designed and configured for payload drops. Using an SR-designed gravitational parachute release system, the Velvet Wasp can drop a range of emergency supplies / humanitarian payloads into areas otherwise difficult to reach. The system is also capable of carrying and deploying a wide range of precision-guided munitions.

Basic Configuration: The platform is built around an x8 motor / rotor drive system with two counter-rotating propellers / motors at each corner. The platform has been designed with long-range, endurance missions in mind in a wide range of operating conditions. The platform integrates a Harris Hornet payload carriage / release system, configured for both humanitarian and military payload options.

Technical Overview: Harris Hornet missile / supplies release system; Precision-guided munitions; SR gravitational release parachute system; On-board targeting system; Target Tracking for daylight/thermal cameras.

Components / Technical Specifications ⁶ :

Dimensions	1125mm x 920mm x 545mm
Weight	12kgs (without batteries)
Motors & Rotors	SR-Spec KDE Direct
Speed Controller	SR high power single board ESC system
Rotor Arms	Aluminium bent or straight arm
Payload	Options include the following: <ul style="list-style-type: none">• Harris Hornet missile / supplies release system• A broad range of precision-guided munitions⁷• SR gravitational release parachute system
Optical Array	A range of optical sensor capabilities including: <ul style="list-style-type: none">• On-board laser targeting system• 640 thermal imaging camera• HD colour camera• Target tracking system for both daylight and thermal cameras• Live HD streaming to RC operator / ground station
Flight Control	SR Flight Control System
RC / Telemetry Unit	SR custom base station
Video Telemetry	SR long-range 4K HD video / thermal camera telemetry system
Signal Encryption	SR “end-to-end” signal encryption
Airframe	SR-designed & cut carbon fibre
Landing Gear	Fixed, carbon fibre construction
Leg Mounts	SR-designed & cut milled aluminium

Optional Safety Features	A range of options are available to suit all complex operating environments including: <ul style="list-style-type: none">• High altitude propellers• SR emergency parachute system• Object avoidance software• Back-up GPS• 8 motor / rotor redundancy• Back-up flight control systems• Back-up power supply
--------------------------	--

Performance Capabilities ⁸ :

Max Telemetry Range	150 kms from base station
Max Live HD video streaming range	100 kms from base station
Max Endurance	1+ hours
Max Payload	35+ Kg
Max Speed	100 km/h

⁶ All specifications are subject to change without notice and may vary depending on specific customer requirements.

⁷ The platform has been configured for a range of other precision-guided munitions, all sold separately by the relevant supplier.

⁸ Precise performance levels will depend on payload, telemetry kit used, operating environment, battery set up / condition, climatic conditions etc.



Built by Operators for Operators



ACXODUS ASIA
18 Boon Lay Way #09-107/108 Tradehub 21 Singapore 609966
Phone : +65 6297 0600 | Email : info@acxodus.com |
www.acxodus.com

Follow us:



[@SteelRockUAV](https://twitter.com/SteelRockUAV)



facebook.com/SRUAV

Disclaimer:

This document is for information only and is not intended to create legal relations between SteelRock Technologies ("SR") and the recipient. Any orders for products or services supplied by SR shall be subject to contract and governed by SR's terms and conditions.